

DGT electronic board documentation*

Congratulations with your new DGT electronic chessboard.

This document describes the setup procedure of the different programs that come with this board.

Contents

DGT electronic board documentation.....	1
1 Contents of the box.....	1
2 Minimal hardware requirements	2
3 Contents of this CD.....	2
3.1 DGT_Suite_Setup_v2.0(.exe)	2
3.2 DGT_Board_Setup_Wizard_1.2.2 (4 MB).....	3
3.3 DGTBoardTester1.1 (680 kB)	3
3.4 Announcements (1.5 MB per language).....	3
3.5 Queen5 (1.2 MB).....	3
3.6 ToMa (3 MB).....	3
3.7 Chess Show (10 MB).....	3
3.8 ChessTheatre (2.5 MB)	3
3.9 WoodIn (1.5 MB)	3
4 Extras	3
4.1 GameKeeper	3
5 Documentation.....	4
6 Videos	4
7 Screenshots	4
7.1 Boardsetup	4
7.2 BoardTester	4
7.3 Queen5.....	10
7.4 ToMa.....	10
7.5 ToMa Video ChessShow.....	11
7.6 ChessTheatre	12
8 Maintenance and cleaning of your board	12
9 Other chess programs	13

1 Contents of the box

In the box there should be the following items, the letters refer to figure 1:

- A The electronic board
- B A set of chess figures with an extra black and white Queen, a total of 34 pieces.
- C A USB cable, 3.5 meter length (11 ft) (a special serial cable if you have a serial board)
- D A connection cable for a DGT XL clock
- E A CD-Rom with installation software (this CD)
- F A CD-Rom with a free DGT-Fritz Chess Program
- G **Optional:** DGT XL chess clock (depending on the package you bought)

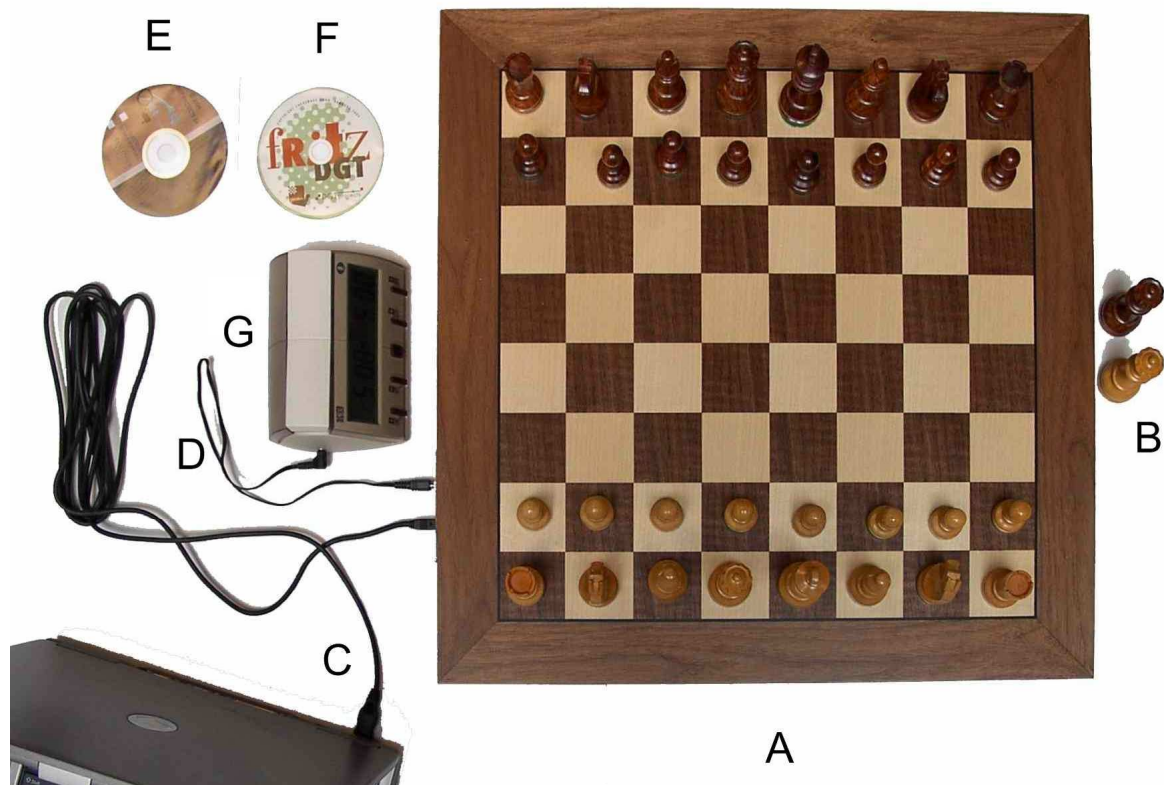


Figure 1

The model and colours may differ from the picture.
Check if you received everything. If your set is not complete, please contact your retailer.

2 Minimal hardware requirements

A PC with a Pentium III processor 800 MHz

128 Mb RAM memory

10 MB free disk space

A free USB socket (a COM port for a serial connected board)

A CD or DVD Rom drive or an internet connection

Operating system Windows 2000, XP or Vista

It is also possible to run the software on an Apple Macintosh, running a virtual PC with Windows XP or Vista.

Check for updates on www.dgtprojects.com/downloads.htm

3 Contents of this CD

This CD contains the driver for the electronic chessboard. It is essential to run the driver setup **before** connecting the USB cable in the computer.

If you already connected the board to your computer, disconnect it before running the setup program.

The following software is on the CD

3.1 DGT_Suite_Setup_v2.0(.exe)

This program calls all the other setup programs. One by one you can choose what you want to install on your computer.

This program calls the setup programs that are located in the Programs folder of the CD

These programs are in the order that they are called by the setup wizard:

3.2 DGT_Board_Setup_Wizard_1.2.2 (4 MB)

This is essential to operate the board and cannot be skipped.

Follow the steps of the wizard and check the appropriate boxes. At the end of this wizard you will get a window which lets you choose between a USB and serial connection. Click in the right section and follow instructions. It is wise to set up your board with several chess figures, so that you can check at the end of the wizard, that the detected positions are the same as on your real board.

3.3 DGTBoardTester1.1 (680 kB)

This is a small program to test the communication between the computer and the board. It also allows you to set some preferences. It is recommended to put at least two chess figures on the board to check the positions.

3.4 Announcements (1.5 MB per language)

Installing this will cause your computer to speak out the move you, or your opponent made. You can choose another additional language, if you run the main setup program once more, or run a specific setup program in the announcements folder. See section 7.2.5 how to choose one out of many languages.

3.5 Queen5 (1.2 MB)

Queen5 allows you to record games played on your board, and save them in Portable Game Notation (PGN) files.

The electronic boards have an internal memory in which you can store thousands of moves. The board needs electrical power to store played games in its memory, but remembers the games stored even without power.

Queen5 is the only program that can read out the internal memory of the e-board.

3.6 ToMa (3 MB)

Tournament **M**anager. This software can broadcast live played games to (large) display clients or to the internet. It is specially designed for tournaments with multiple e-boards.

ToMa needs a licence to broadcast more than one game at the time. Without the licence the program is fully functional for one board, the text "unlicensed" will be displayed though in some places.

Take a look on the [ToMa page of DGT](#) how to obtain a licence

3.7 Chess Show (10 MB)

ToMa Video Chess Show is a sophisticated display client for ToMa. It is highly customizable, for inserting Logo's and background for making a great presentation of your games. You need to buy a licence if you want to show more than one game.

3.8 ChessTheatre (2.5 MB)

This program can display the contents of a Portable Game Notation (PGN) in a graphic interface. Also you can publish with ChessTheatre your saved games to the internet or your local LAN. The visitor will be presented with a graphical representation of your games, without installing a copy of ChessTheatre. There is a special Blog site www.chesstheatre.com for presenting your own or interesting games of other players.

3.9 WoodIn (1.5 MB)

WoodIn is a plug-in for the program Blitzin of the [Internet Chess Club \(ICC\)](#) With this plug-in you can play over the internet through the ICC servers with a real board and chess figures.

You have to download and install Blitzin first before you can use WoodIn.

4 Extras

4.1 GameKeeper

In the folder "extra" there is the Zipped program GameKeeper.

This is a plug-in for the program ChessMaster of Ubisoft.

If you want to use this, first install ChessMaster and then unpack the Zip file to the folder in which Chessmaster is installed, by default this is "\Program Files\Ubisoft\Chessmaster 10th Edition". The name of the edition may vary.

Read the "Readme.txt" file of GameKeeper **very** carefully. This contains vital information.

5 Documentation

This section of this CD contains several manuals of DGT products, including products that you will not find in your box such as chess clocks.

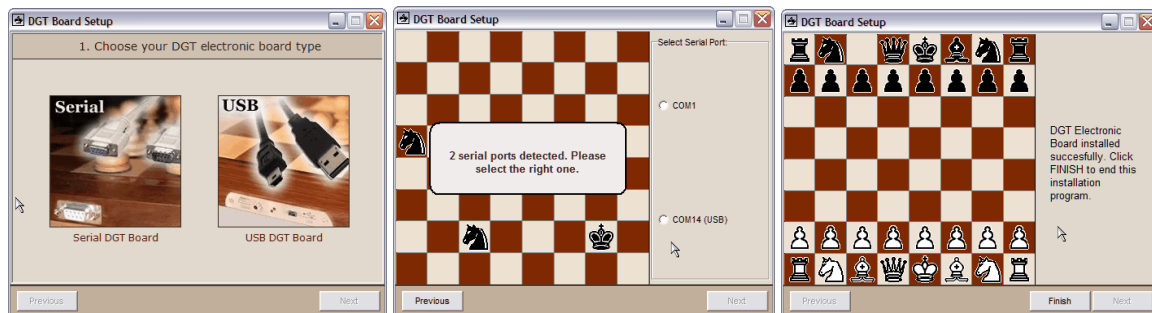
6 Videos

In this section there are demonstration and instruction videos.

7 Screenshots

7.1 Boardsetup

3 of the steps that check if your board works properly. It is advised to have several chess figures on the board before starting this test.



7.2 BoardTester

This is another way to test the integrity of representation of the position of your board. In this program you can also call the interface of the board driver.

7.2.1 Position Tab



Diagram

Always shows the current position on the electronic chess board and the clock times.

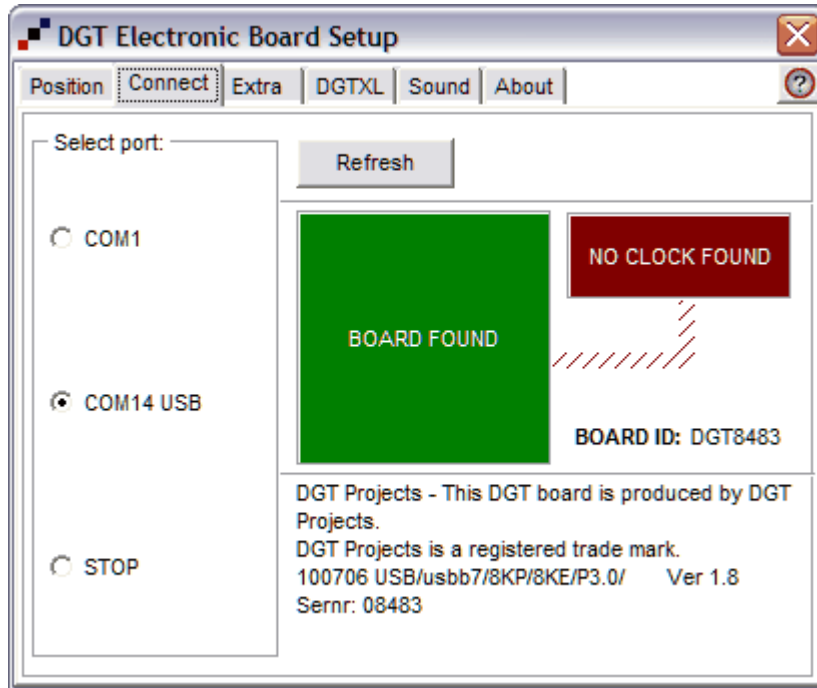
Automatic rotation option

Normally you can leave this option checked at all times. It will automatically correct the position if you are playing with the electronic board connector on the right side, or if you start with the white pieces on the top of the electronic board.

Rotate button

Clicking this button overrides automatic rotation and rotates the board. This option is useful if you start a game with a position in which the orientation of the board is not clear (for example, an endgame position with a few pieces on the board). Note that these rotation settings have nothing to do with the flip function of your chess program. The diagram always shows "white on bottom".

7.2.2 Connect Tab



Here you setup the COM port that your board is connected to. These settings are stored and will be automatically retrieved next time you use the driver, so normally you only need to set this up once. When the board is detected, and communication is OK, it will show "Board Found" and display its trade mark information. When a clock is detected, it will show "Clock Found".

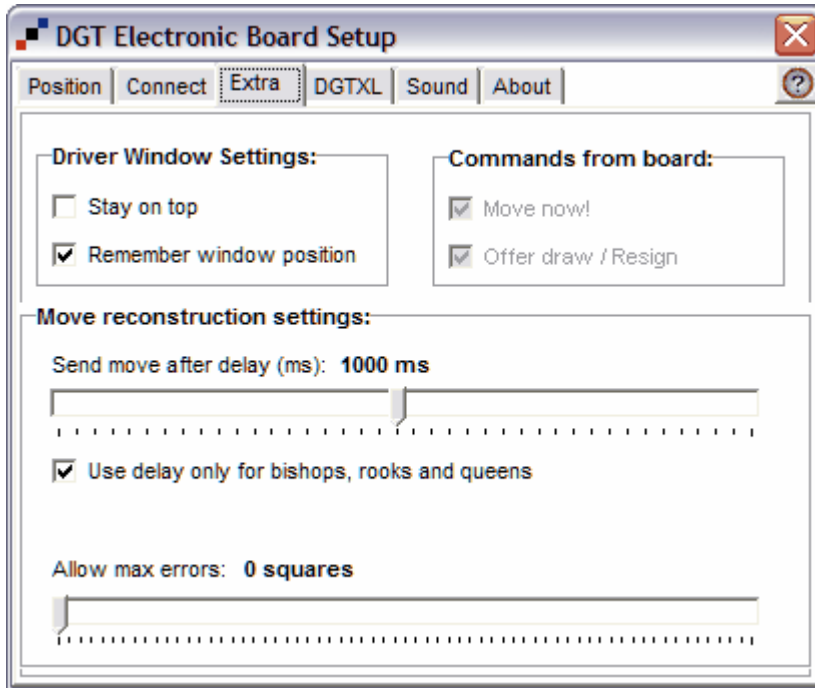
Select port

Choose the COM port that your electronic board is connected to. The available ports on the system are automatically detected and enumerated here. Selecting "STOP" will stop all communication with the board. Selecting a port will initiate communication over that port, which should not take more than a few seconds.

Refresh button

You only will need to click on this button if you have connected another board while this window is open.

7.2.3 Extra Tab



For setting up properties of the driver window itself, and the move reconstruction algorithm.

Stay on top

If this option is checked, this window stays on top of all other windows.

Remember window position

When checked, the next time you open the dialog it will appear open in the same location on your desktop. Otherwise, it will open in the center of the screen.

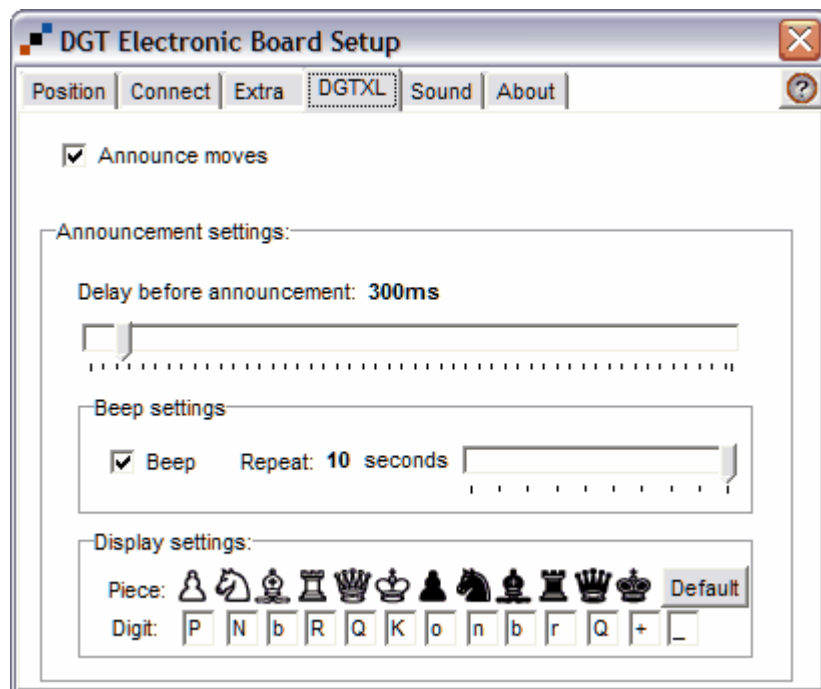
Send move after delay

Amount of milliseconds to wait before a move is send to the program. This gives you some time to slide e.g. a bishop over the board. A setting between 500 and 1000 ms is recommended.

Allow max errors

If there is a difference between the position in the program, and the position on the electronic board, the different squares will highlight. If more than "max errors" squares are highlighted, no move reconstruction is done at all.

7.2.4 DGTXL Tab



Several options for owners of a DGT XL clock.

Announce moves

Check this option if you want the clock to display the moves

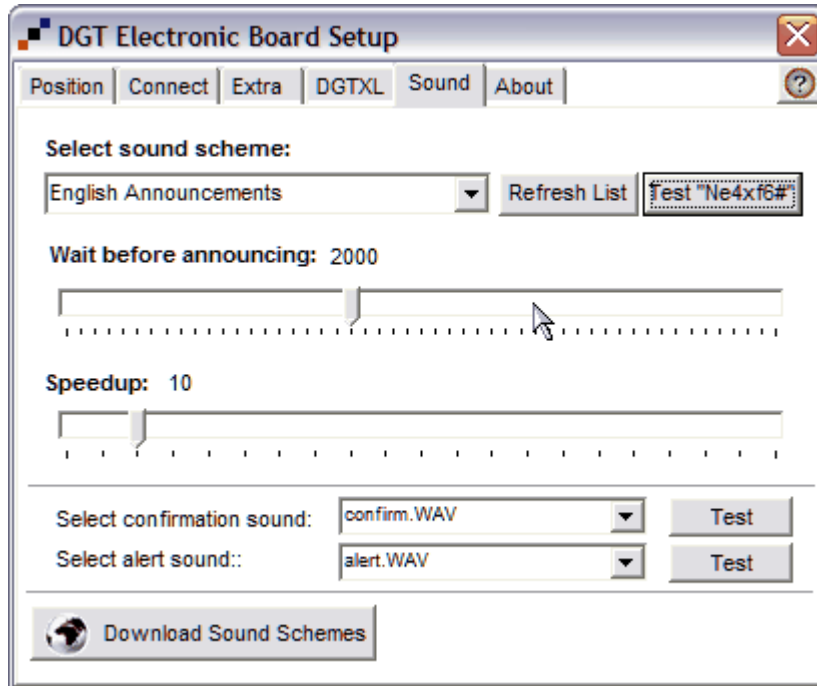
Announcement settings

You can set the delay time before the move is announced, 300 ms is a good setting

Beep

Select this box if you want the clock to beep if the position on the board differs from the position of the program. You can make the clock repeat this beep after a specific amount of seconds

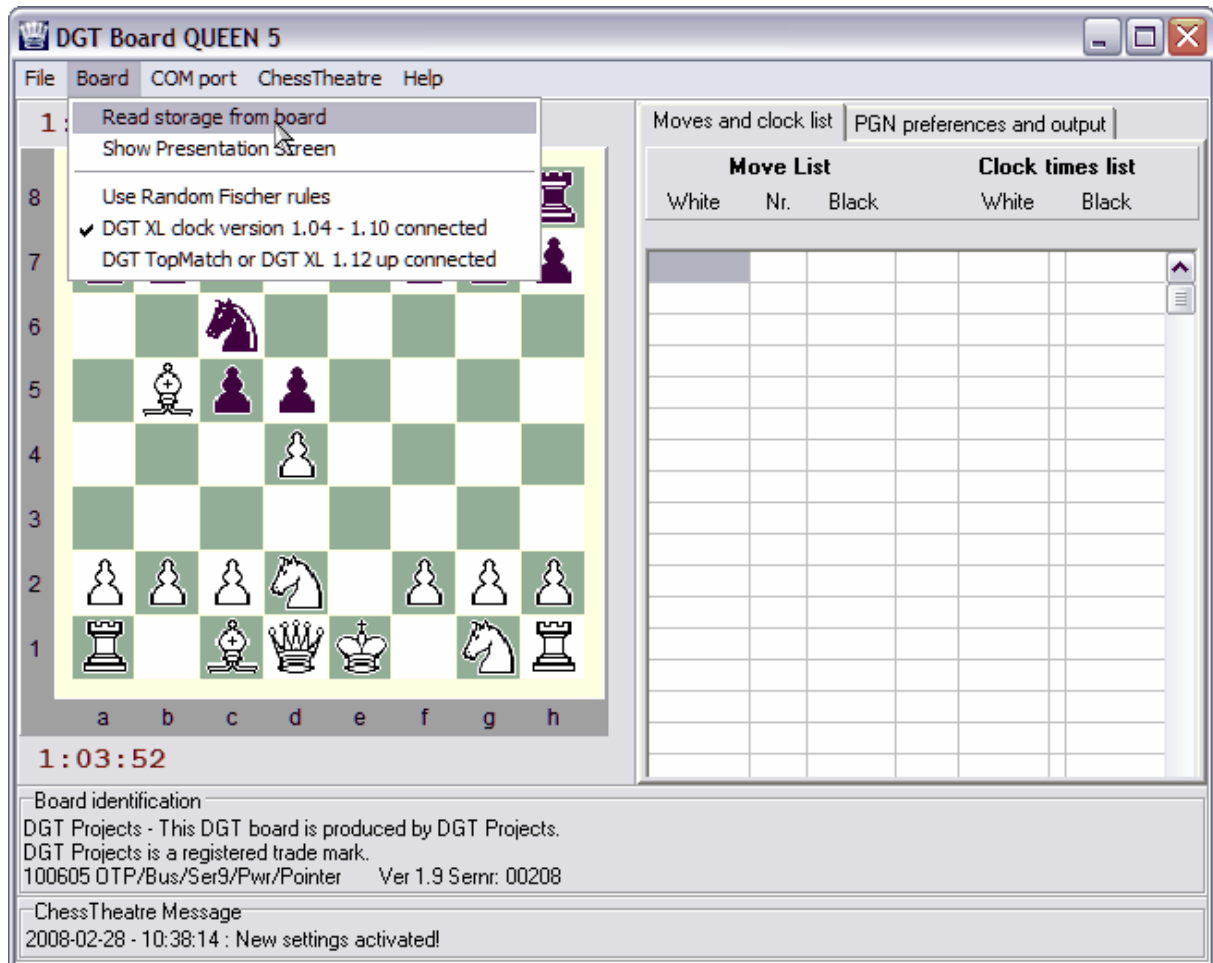
7.2.5 Sound Tab



You can change the settings of the spoken announcements. Choose “none – sound disabled” if you don’t want to hear the announcements.

There is also a button to download a new language directly from the internet site of DGT

7.3 Queen5



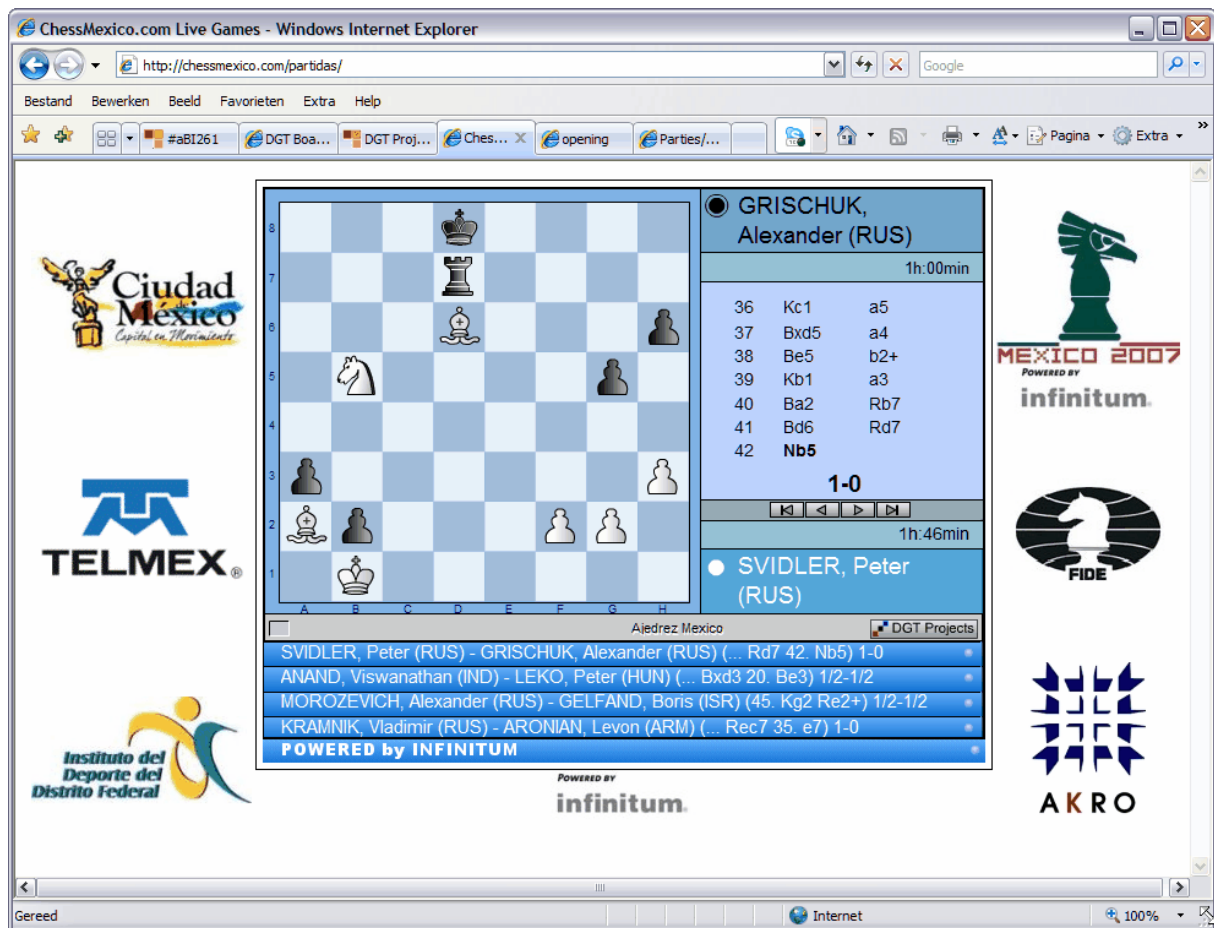
Queen5 lets you read out the internal memory of the board. Remember that the memory is only filled when the board is powered, but the data will be kept when the power is disconnected.

7.4 ToMa

ToMa can communicate with multiple boards at the time. This is useful for tournament presentation in the Tournament room as well as on the internet.



ToMa in the venue.



ToMa on an internet site

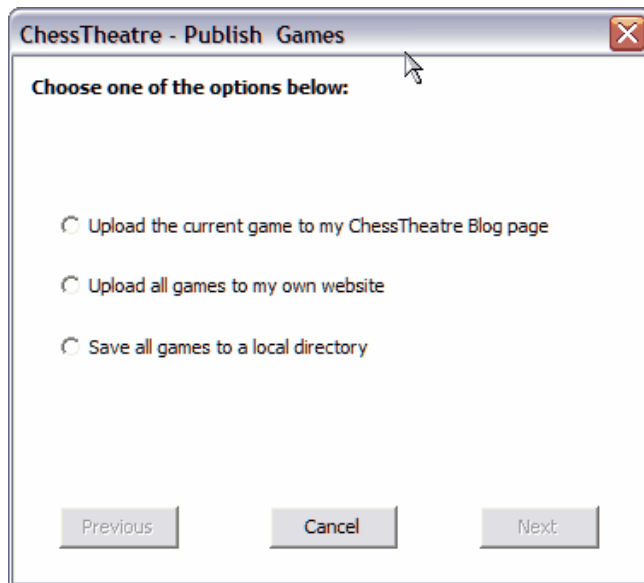
7.5 ToMa Video ChessShow

This is a display for ToMa that can be changed to match the style of your club or company.



7.6 ChessTheatre

With ChessTheatre you can upload your games. It is also a graphic viewer for your PGN files.



A fragment of a web page of www.chesstheatre.com

last edit 2008-01-14 | 23:39

2008-01-09 | 15:57
DGT Opening Simultan - board 9
DGT Opening Simultan / Enschede / 2008-01-09



● **Floris Assendelft**
0:00:00
56. Rd7xd5 Nf3-e1 57. b3-b4 Rh2-h3 58. Kc3-d2
Ne1-f3 59. Kd2-e2 Rb6xb4 60. Nd1-f2 Nf3-d4
61. Ke2-f1 Rh3-f3 62. Kf1-g2 Rb4-b2 63. Rd5xd4
Rb2xf2 64. Kg2-g1 Rf2-f1 65. Kg1-g2 Rf3-f2
66. Kg2-g3 f5-f4 67. Rf7xf4 Rf2xf4 68. Rd4-d5
Rf4-f5 69. Rd5-d4 Rf1-f3 70. Kg3-g2 Rf3-f2
71. Kg2-g3 Rf5-f3
*

○ **Tea Lanchava**
0:01:47

add comment

The most interesting game of this simultan event : black is a strong young Dutch player. Black seems to have won, but it was said this game ended in a win for white due to blacks time trouble ...

8 Maintenance and cleaning of your board

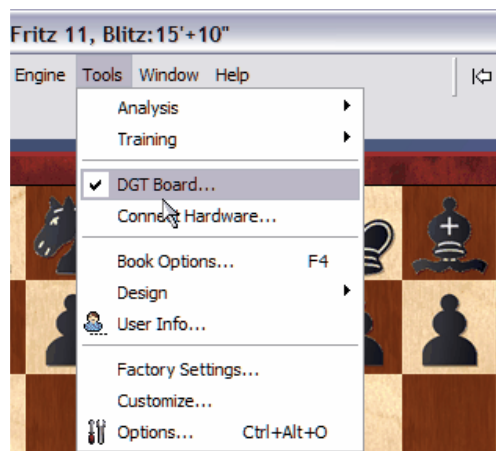
The wooden part of the DGT chessboards are manufactured by the well know chessboard builder RepachadosFerrer in Barcelona, Spain.

The boards are finished with several layers of varnish, but still it is recommended not to expose the board to sunlight for a long time, this might bleach the wood.

The board can be cleaned with a standard non abrasive furnish cleaner. Small scratches may be concealed with products that also used in the automotive industry.

9 Other chess programs

Most Chess programs that support a DGT chessboard have an option in the **Tools menu** to use a DGT board as input device. Like in Fritz in the example.



* DGT electronic board documentation EN, last updated 13 June 2008