

Installation guide DGT Bluetooth Chessboard.



Congratulations, you are the owner of a unique chessboard that can connect to a computer using Bluetooth functionality.

With this board you can play against the strongest chess programs, against other human players, and also on the internet, with real wooden chess pieces.

If you are not near a computer, you can use a DGT XL clock to indicate your opponent's moves. All software needed is included in this box.

Minimum configuration requirements of your computer:

Pentium 4 processor, 512 MB Ram
Windows® XP/Vista
Bluetooth® functionality

© "Bluetooth" is a registered trademark of the Bluetooth Special Interest Group

© "Windows" is a registered trademark of the Microsoft cooperation.

Contents of the box.



The box should contain the following items:

- 1 DGT Chessboard
- 1 set of DGT Chess pieces with 17 pieces of each color (2 queens per color)
- 1 Drawstring bag
- 1 USB cable of 3 meters length
- 1 retractable USB cable, 0.9 meters
- 1 universal USB power adapter
- 1 polymer Li-ion battery
- 1 cable to connect the board to a DGT XL clock
- 1 CD with the drivers for the board and extended manual in PDF format
- 1 extra CD with a special version of the Fritz 9 chess program
- 1 Quick start guide on paper (this manual)

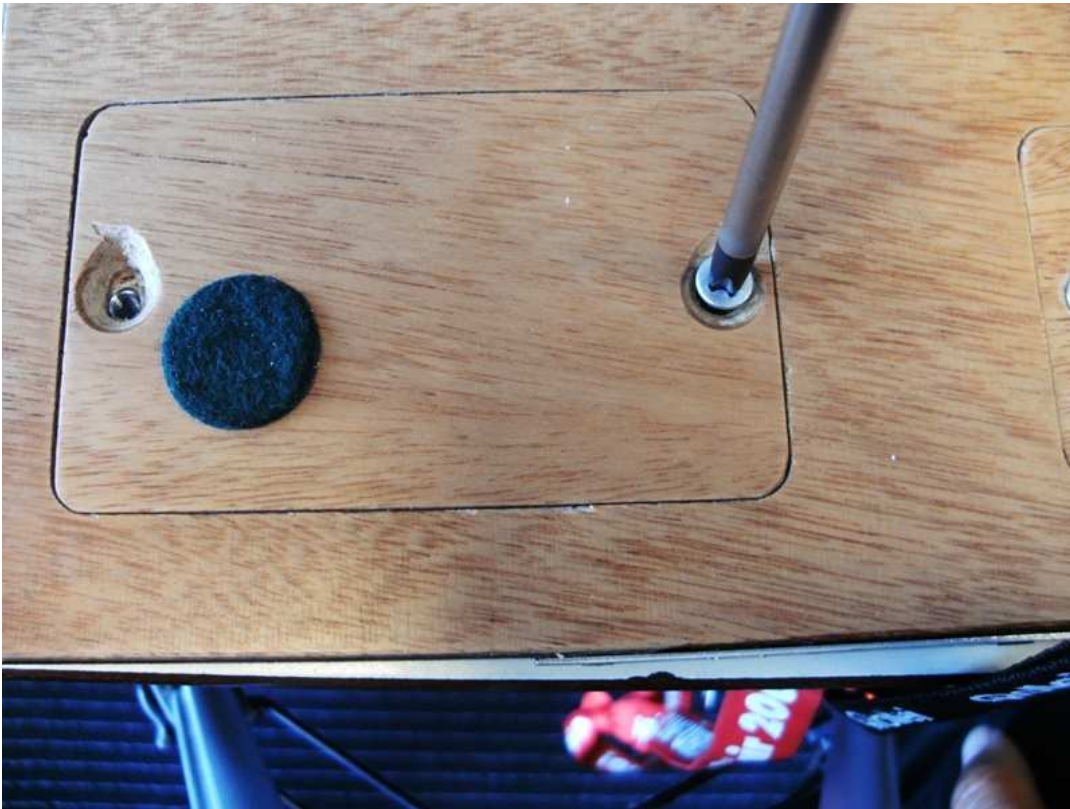
Please contact your dealer if one of these items is missing.

Do not connect the USB cable until you are instructed to do so.

Installing the battery.

Before you can use the board, you have to install the battery. For some countries the battery may be pre-installed.

Place the board upside down on a table with the connection plate facing to you. Take precautions to prevent scratching the top of the board.



Open the smaller lid on the back of the board.





Note that the connector is on the back side of the printed circuit board, you may not see it immediately



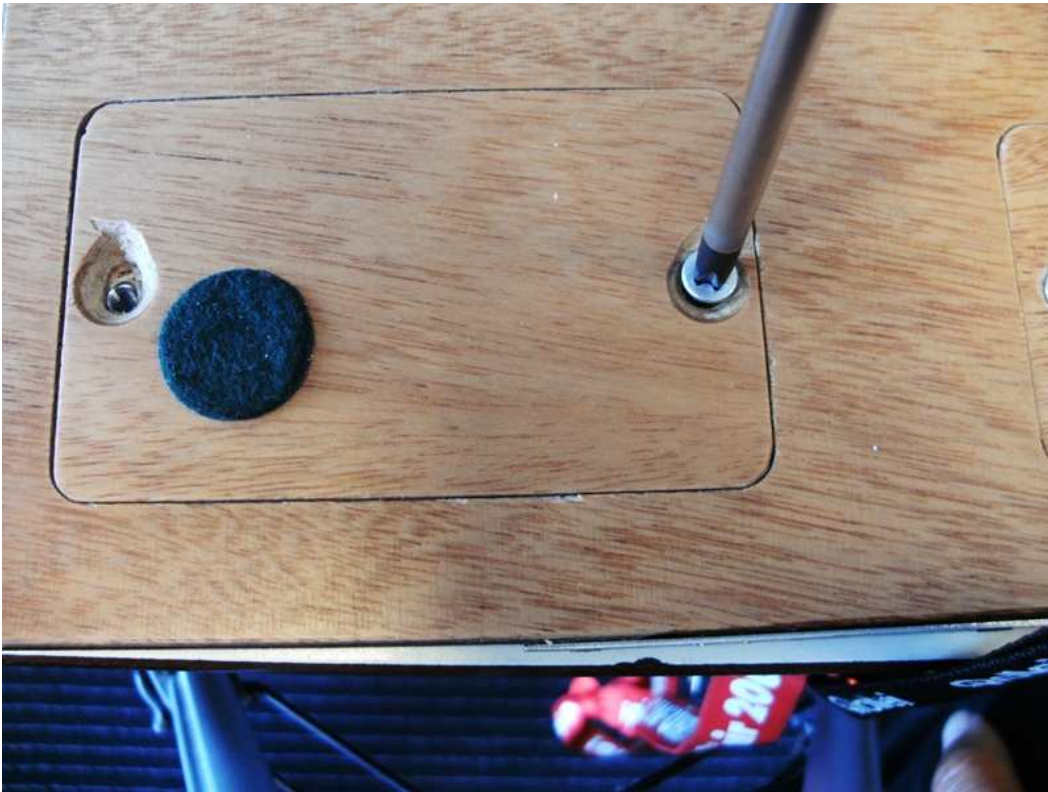
Push the connector with the metal parts facing you in the corresponding connector on the back side of the printed circuit board



Push it gently in place with a ballpoint



Place the battery in the opening of the board



Attach the lid with the 2 screws

Picture 1 inserting and connecting the battery

The battery is not fully charged. It may be necessary to charge it before you can use the Bluetooth functionality of the board.

To charge the battery, use the USB cable to connect the board to a computer or to the USB power adapter. After installing the battery, the board will automatically switch on.

LED status indication

Green blinking	Battery is sufficiently charged. The board is detectable, but not connected.
Green	The board has established connection with a Bluetooth device.
Orange blinking	The board is being charged. The board is detectable, but not connected through Bluetooth
Orange	The board is being charged and is connected to a Bluetooth device.
Red blinking	There is a charge fault or the battery is low while there is no Bluetooth connection
Red	Battery is low on power and not charging while there is a Bluetooth connection.
Off	The board is switched off or the battery is exhausted or not present.

Power button

Short push	The board switches on / off
Push and hold for 2 seconds	The board will display the power status on a connected DGT XL clock

Installing the Driver for the DGT Board.

1. Insert the CD marked "DGT E-Board, Windows driver, Extra Software" in the CD or DVD drive of your computer.
2. The setup program will start automatically. If it does not start automatically you can run the program "DGT_Suite_setup" in the root of the CD.
3. It is recommended to install all programs suggested by the setup program
4. Connect the board to your computer using the USB cable when instructed to do so. Do not connect it earlier.
5. Windows will come up with a "Found New Hardware" balloon.
6. In the following dialog box, choose the option to install the driver yourself
7. Choose "automatic installation"
8. Windows will notify you that the new hardware is ready for use.

Sometimes windows will not be able to find the USB device automatically.

In this case you should choose the folder on CD in which the driver can be found:

Follow these steps:



Choose "No, not this time" in this window



Choose "Install from a list ro specific location (Adavanced)"



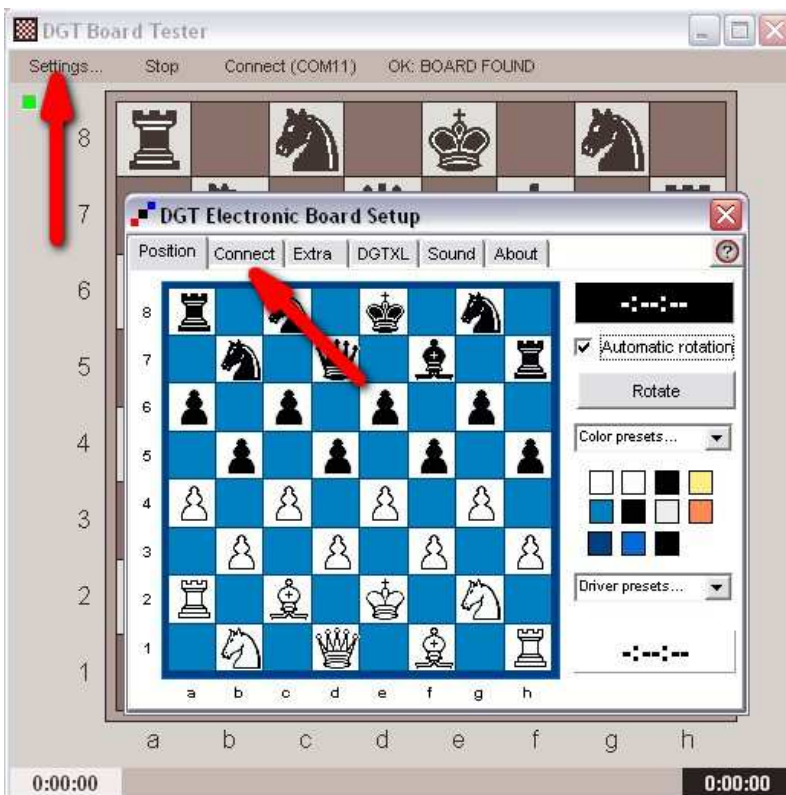
Browse to the folder "USB driver" on your DGT setup CD



After installing the necessary drivers the DGT Board Tester will open if you leave the box in front of this option checked.

Click on the "Settings" option in the menu.

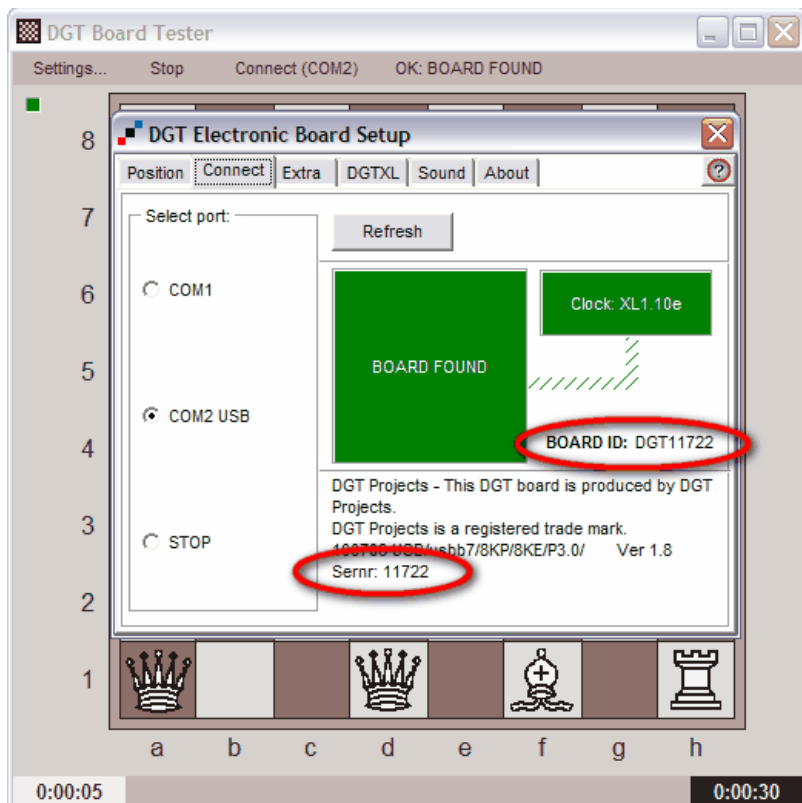
Then click on the "connect" Tab in the "DGT Electronic Board Setup" window



Picture 2 The Settings of the Board tester

Select the option button in front of the port that is marked as "COM XX USB" whereby XX indicates the COM port number.

In a few seconds the board will identify itself, of course the numbers in the red ellipses will be different in the setup window of your board.



Picture 3 The board is found on COM 2 USB

Place some chess pieces on the board to check whether the board is functioning properly. To check whether all squares of the board are properly recognizing the pieces, you can first place all pieces on the light coloured squares as indicated in Picture 2. Secondly check the remaining squares by moving the pieces to the dark coloured squares.

For more details about the possible settings of the "DGT Electronic Board Setup" please consult the manual on the CD. Information about the other programs can also be found in this manual.

The setting made in this window will be applied for all programs that use the DGT board driver, for example chess programs such as Fritz.

Connecting the Bluetooth board to a Computer.

To use the wireless e-board your computer must have Bluetooth capability.

Some computers have built in Bluetooth hardware. Others require an external Bluetooth USB device. We recommend using a Bluetooth class 1 device with a range of 100 m. A Bluetooth USB device can be bought in any computer and/or electronics store.

Inserting the Bluetooth USB stick

Windows XP and Vista recognize most USB Bluetooth devices and will automatically install the necessary drivers, when you insert the device for the first time.

Some Bluetooth device manufacturers have their own drivers, you can use these too, but the setup will be different than in the text and pictures below. Check the manual of your Bluetooth device to install that software.

Windows will react in a similar way as in the pictures in Picture 5



Picture 4 New hardware found

The installer will give some more messages and finally:



Picture 5 installing the (USB) Bluetooth radio

If Windows does not install the drivers automatically, then you may have to install the software that is on the CD that comes with the Bluetooth device.

The pictures in the next section are made with Windows driver for the device.

They may look different on your computer.

Pairing the board to your Bluetooth connection

As soon as the Bluetooth device is properly configured, your computer will show a Bluetooth icon in your system tray.



By double clicking this icon a window as in Picture 9 will appear.

You can skip the next section until Picture 9 if you see this icon in the system tray.

If this icon does not appear in the system tray, open the Windows Control Panel and choose the "printers and other hardware" category if necessary.

In Classic view you will an icon "Bluetooth Devices" directly.



Picture 6 Control Panel Categories



Picture 7 Bluetooth Devices in the Control Panel

In the "Options" Tab check the box as in Picture 8



Picture 8 Switch on the icon in the system tray.



Picture 9 Adding a Bluetooth device

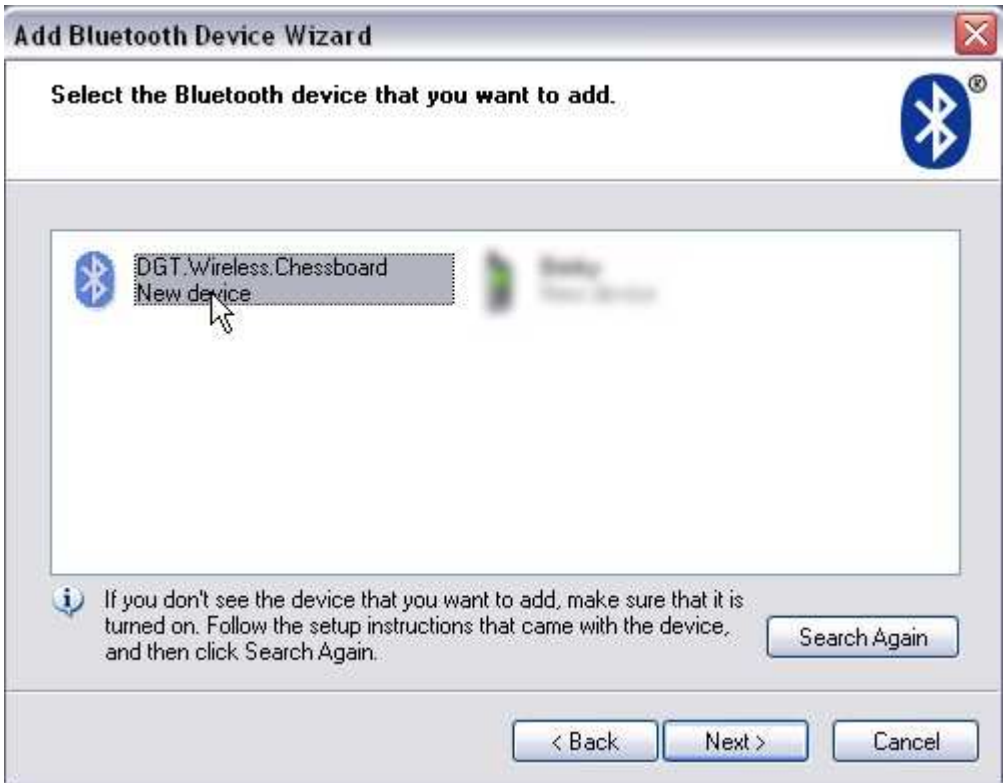
The "Add Bluetooth Device Wizard" will open



Picture 10 Add Bluetooth wizard

Make sure that your board is switched on (on battery power or USB power) and check the box "My device is set up and ready to be found". Then click "Next"

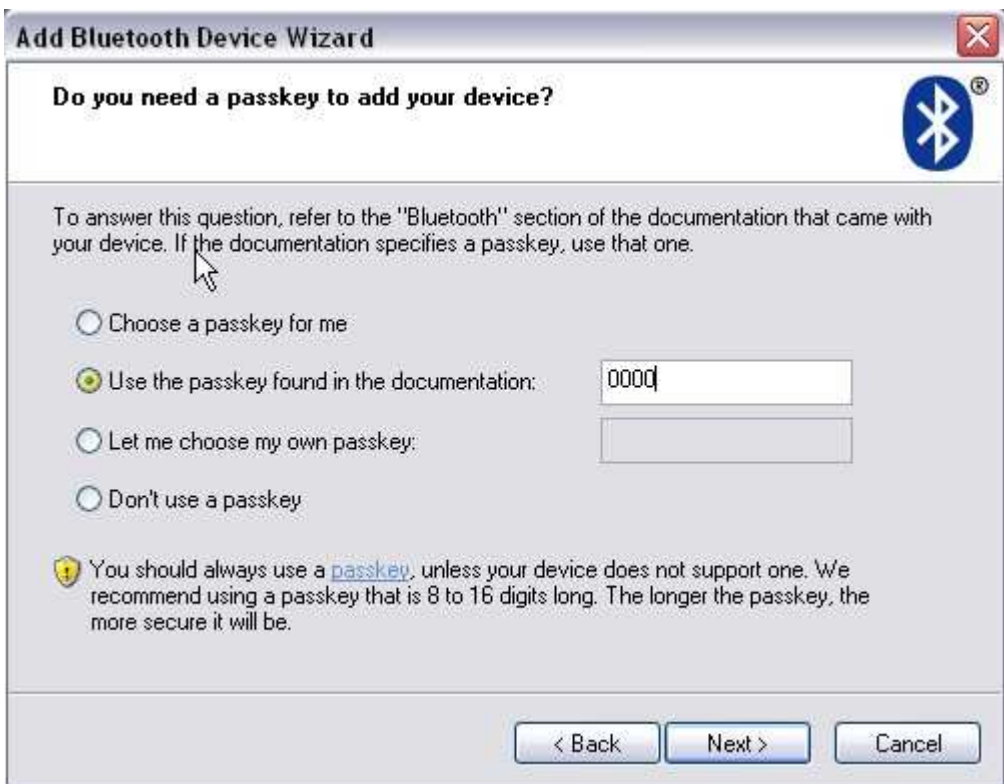
The wizard will search for Bluetooth devices. This may take a few minutes. The next window will show the available Bluetooth devices.



Picture 11 Bluetooth devices found

Select "DGT Wireless Chessboard" and click "Next"

In the next dialog box choose the second option. Enter "0000" (four zero's) in the blank passkey textbox



Picture 12 Entering the passkey



Picture 13 exchanging passkeys

Two COM ports will be assigned to your DGT Wireless Chessboard. The outgoing COM port will be used for communicating with the board. Make a note of the number of the **outgoing** COM port.



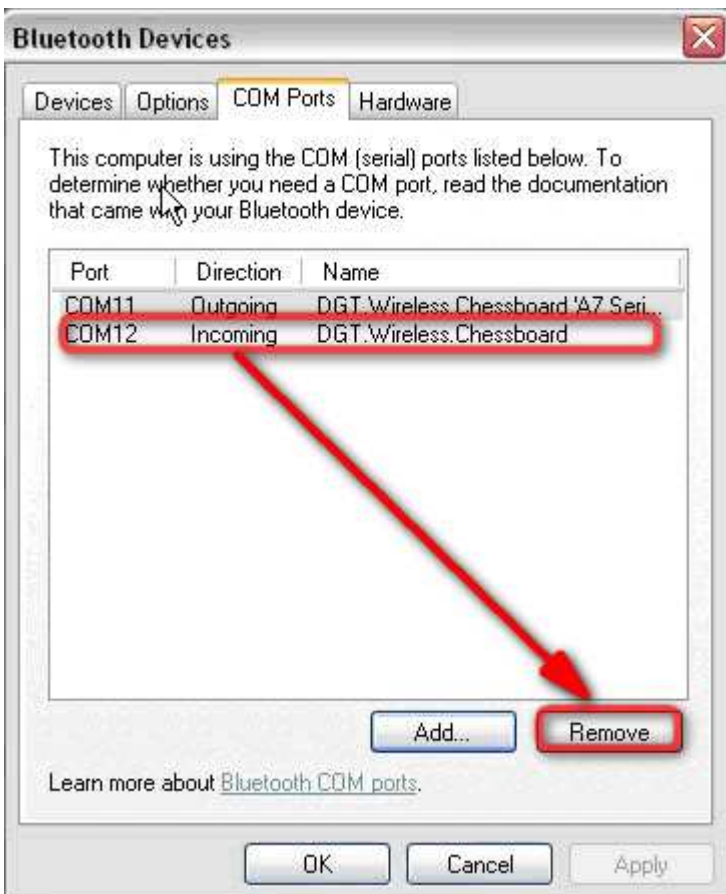
Picture 14 assigned COM ports

The assigned COM ports can be verified by looking in the COM port tab of the Bluetooth Devices window.



Picture 15 checking the COM Ports assigned to the DGT Wireless Board.

To avoid choosing the wrong port for the E-board it is recommended to remove the incoming port.



Picture 16 Removing the incoming COM port

Connect your board wireless to your computer

Start the DGT BoardTester which can be found in the start menu under (All Programs) "DGT projects" if the default folders are accepted in the setup.

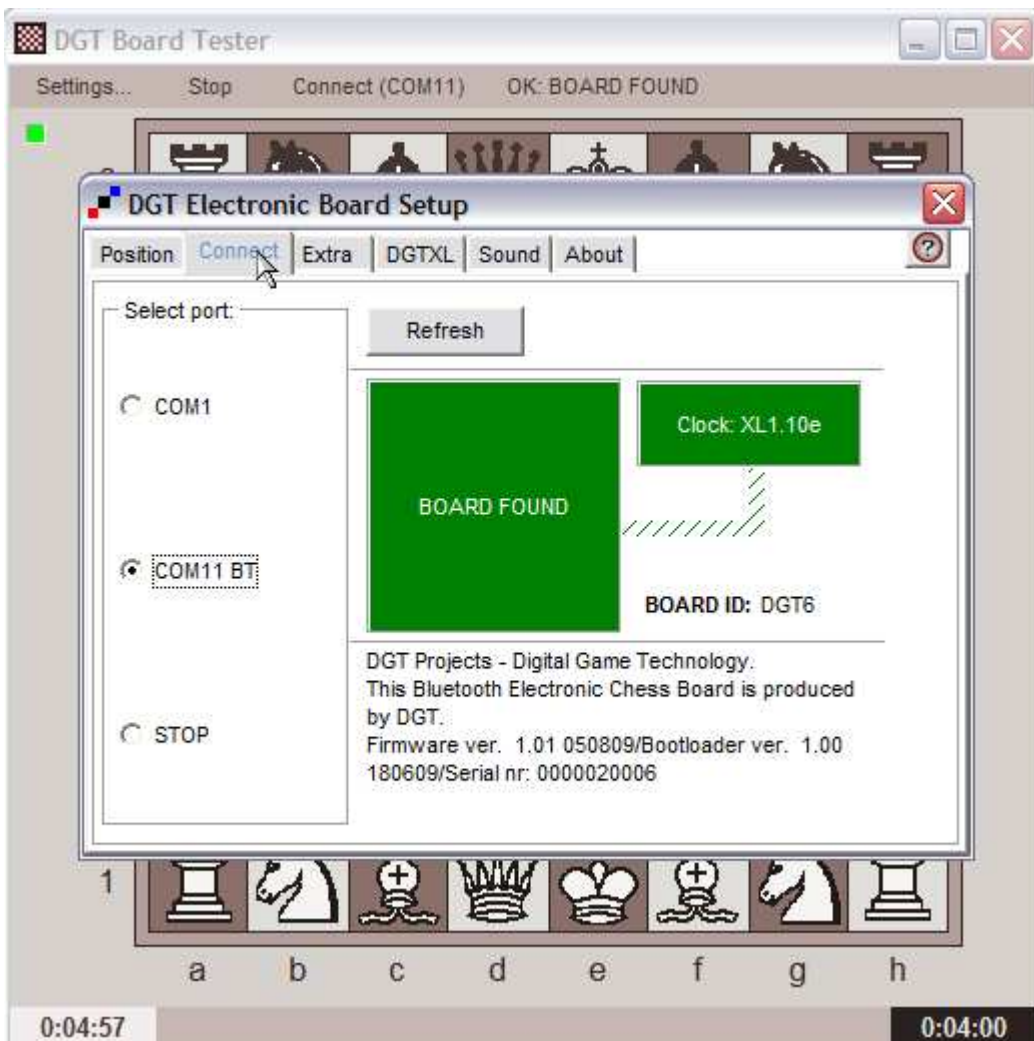
Click "Settings" in the menu and then select the "Connect" Tab in the driver window.

Click on the option button that is in front of the COM port number that previously assigned as "OUTGOING COM PORT" during the Bluetooth setup. See Picture 14 for more details.

Be sure **not** to choose the other one that was identified as "INCOMING COM PORT" as this might freeze your application. You can ignore this line if you had removed the incoming port as in Picture 16

The COM ports will only be shown if the connection is established. This is also the case when using the USB connection, so you may see in both the USB COM port, and the Bluetooth ports this window.

When both connections are active you can to connect the e-board by USB or Bluetooth by selecting the corresponding COM port number. You will recognize the ports by the suffix as "USB" or "BT"

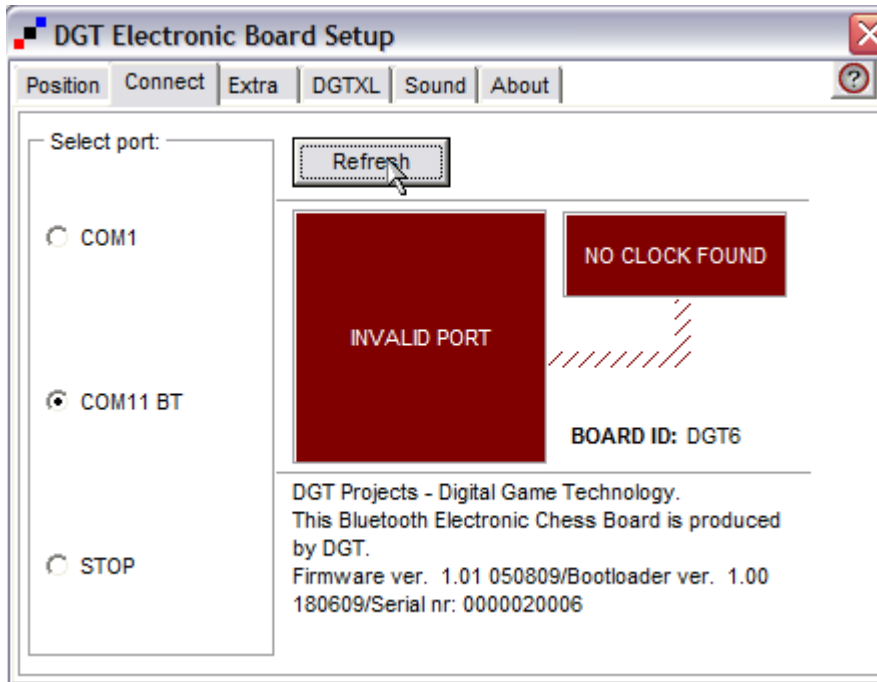


Picture 17 The Board setup window

If you have a DGT XL clock connected to the board, this window will show whether the connection is correct.

The "DGT Electronic Board Setup" window will also appear in other applications that can communicate with the DGT board when you choose this board as an input device. Please consult the manual of these specific programs how to choose a DGT board as input device.

Invalid port



Picture 18 Invalid Port

When you see "invalid port as in Picture 18 Then you should restart the board by choosing the "STOP" option button and then choose your BT COM port again. It is also a good idea to do this if you have a DGT XL clock connected, that fails to show your moves.

If it doesn't change the situation the port may be in use by another program. Try to shut down all applications that might want to communicate with the DGT board.

Manual on CD

A more detailed manual is available on the setup CD.
Have fun!

In case of any problems, please consult the FAQ page on <http://www.digitalgametechnology.com> or <http://www.dgt.nl>.

If problems continue please contact the support department of DGT details of which can also be found on our website.

Maintaining your Bluetooth e-board.

The board contains a Lithium Ion Battery, which is capable of powering your board for at least 24 hours when new. The board contains a charge and discharge circuit to extend the life of this battery as long as possible. Do not charge the battery outside the board with a third party charger. After some years the capacity of this battery will decrease though.

When the battery has reached its end of life, then dispose of it, according to regulations in your country.

The board's firmware is stored in a renewable flash memory. On a regular basis DGT will publish updated firmware for this board on its website.

We recommend to subscribe to our newsletter for Bluetooth e-boards, to keep you informed about the latest news and updates.

You can do this by sending an e-mail to support@dgtprojects.com and put **Bluetooth newsletter** in the subject line. Please include the serial number of your board in this mail, this will give us the opportunity to keep track of the sold Bluetooth boards.

Of course your e-mail address will not be used for commercial activities.

The recognition of the chess pieces is done by electromagnetic resonance. This means that proper functioning of the board may be influenced by electromagnetic fields. These can be caused by large monitors, loudspeakers, or other devices with magnets or coils. Also strong transmitters in the vicinity may cause problems with the board.

Metal surfaces may reduce the sensitivity of the board, so please avoid placing the board on a metal table.

The board is finished with a polyurethane resin. You can clean it with a damp cloth, preferable a microfiber cloth. Do not use any abrasive cleaning products and avoid products that contain silicone oil.

Warranty conditions

Digital Game Technology BV guarantees that your DGT electronic chess board complies with the highest quality standards.

If your DGT e-board – despite our care in choosing components and material, production and transport – nevertheless may show a defect during the first 24 months after purchase, you should contact the dealer where you purchased the appliance.

In order to qualify for the warranty on your new DGT e-board, you should present the warranty card together with proof of (the date of) purchase.

The warranty is only valid if the DGT electronic chess board has been used in a prudential manner.

Our obligations of warranty do not apply if attempts to repair the DGT e-board have been carried out without our explicit permission in writing.

For product questions visit: www.dgtprojects.com

For support contact: support@dgtprojects.com

Please contact your dealer or DGT before returning any goods to the agent who sold the appliance to you.

Warranty card / Garantiekarte / Carte de garantie / Garantiekaart / Гарантийный талон / Carta de garantía

Date of purchase / Ankaufsdatum / Date de l'achat / Datum van aankoop/ Дата покупки / Fecha de compra

DGT productname:

DGT product serial number:

Complaint:

Name of buyer / Name des Käufers / Nom du client / Naam koper / Имя покупателя / Nombre del cliente

Stamp of Seller / Stempel des Verkäufers / Cachet du détaillant / Stempel verkoper / Штамп продавца / Sello del vendedor



Notes: